

ARTWORK PACKAGE

Gina Keatley | Contemporary Abstract Artist

2026

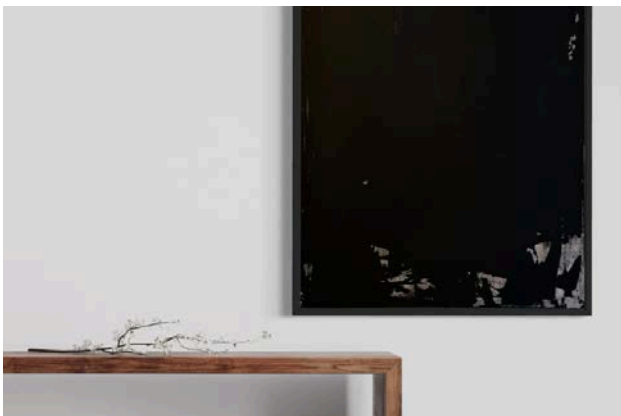
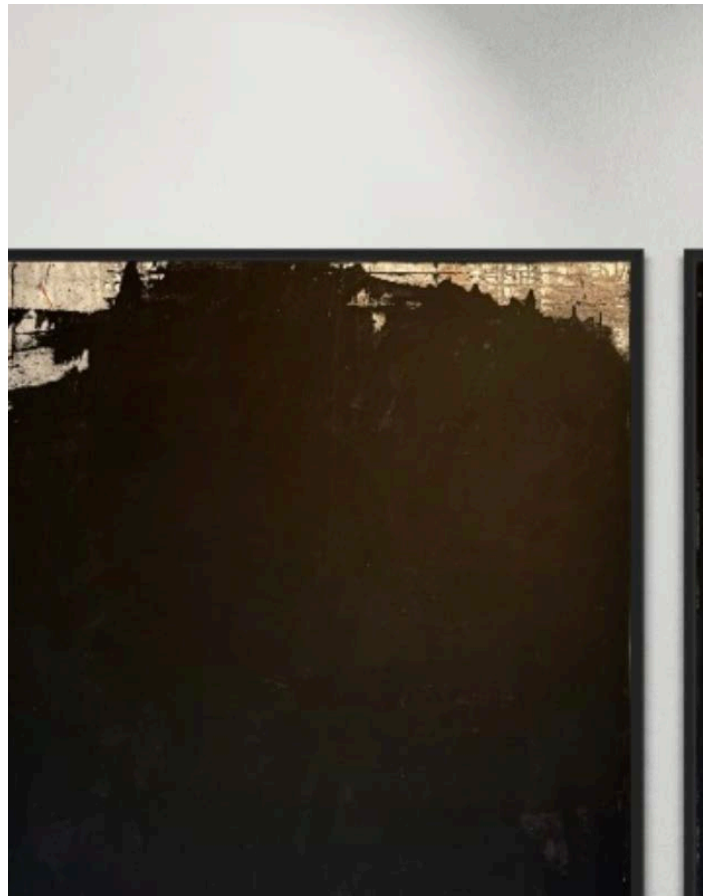
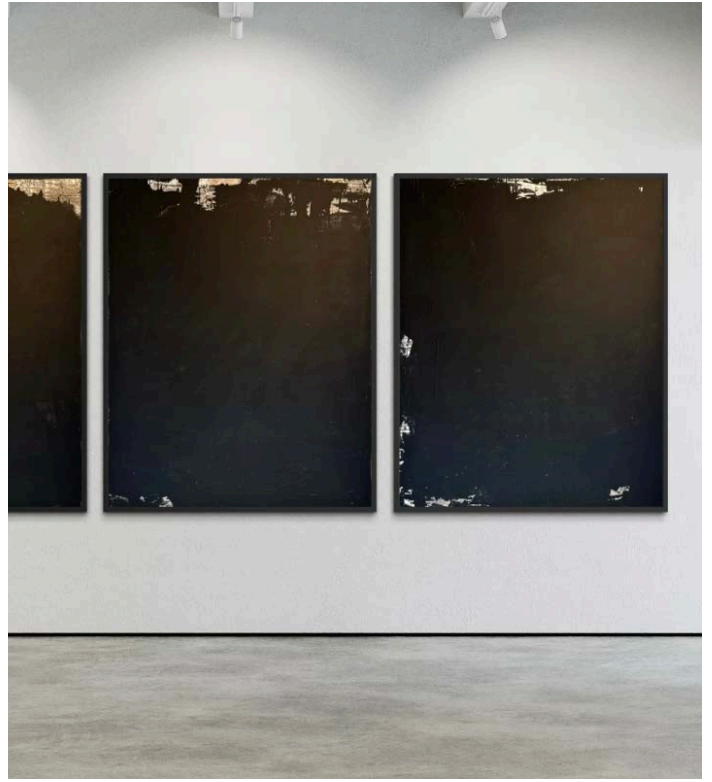
ARTIST BIO

Gina Keatley is a New York–based abstract expressionist whose work focuses on atmosphere, texture, and emotional tone through contemporary abstraction. Her paintings are recognized for their refined use of neutral palettes, subtle contrast, and material depth, qualities that translate naturally into architectural and interior environments.

Keatley is the founder and owner of Bushwick Gallery in Brooklyn, a contemporary art space known for its curated exhibitions and strong visual programming. Through the gallery, she maintains direct access to hundreds of additional artists and works, allowing for expanded options across styles, scales, and aesthetics when needed for future projects.

She is also the author of *Minute Muse*, a forthcoming book releasing Winter 2026. The book distills lessons from influential artists into concise, action-driven insights designed to prompt immediate creative execution. Structured as a series of short entries, it reframes art history as a practical tool—encouraging readers to move from hesitation into action.

Her work is held in private collections internationally and is frequently used in interior design and staging contexts for its ability to elevate a space while maintaining balance, clarity, and restraint.



Latitude is an abstract series designed to bring depth, structure, and quiet intensity into contemporary interiors. Working within a restrained palette of matte black with subtle bronze undertones, each painting builds atmosphere through layered texture, fine droplet application, and controlled surface excavation. The works function as individual focal points or as a cohesive grouping across spaces. Acrylic and mixed media on canvas, 2026.

Oku Three panels, each 48 x 60 inches.



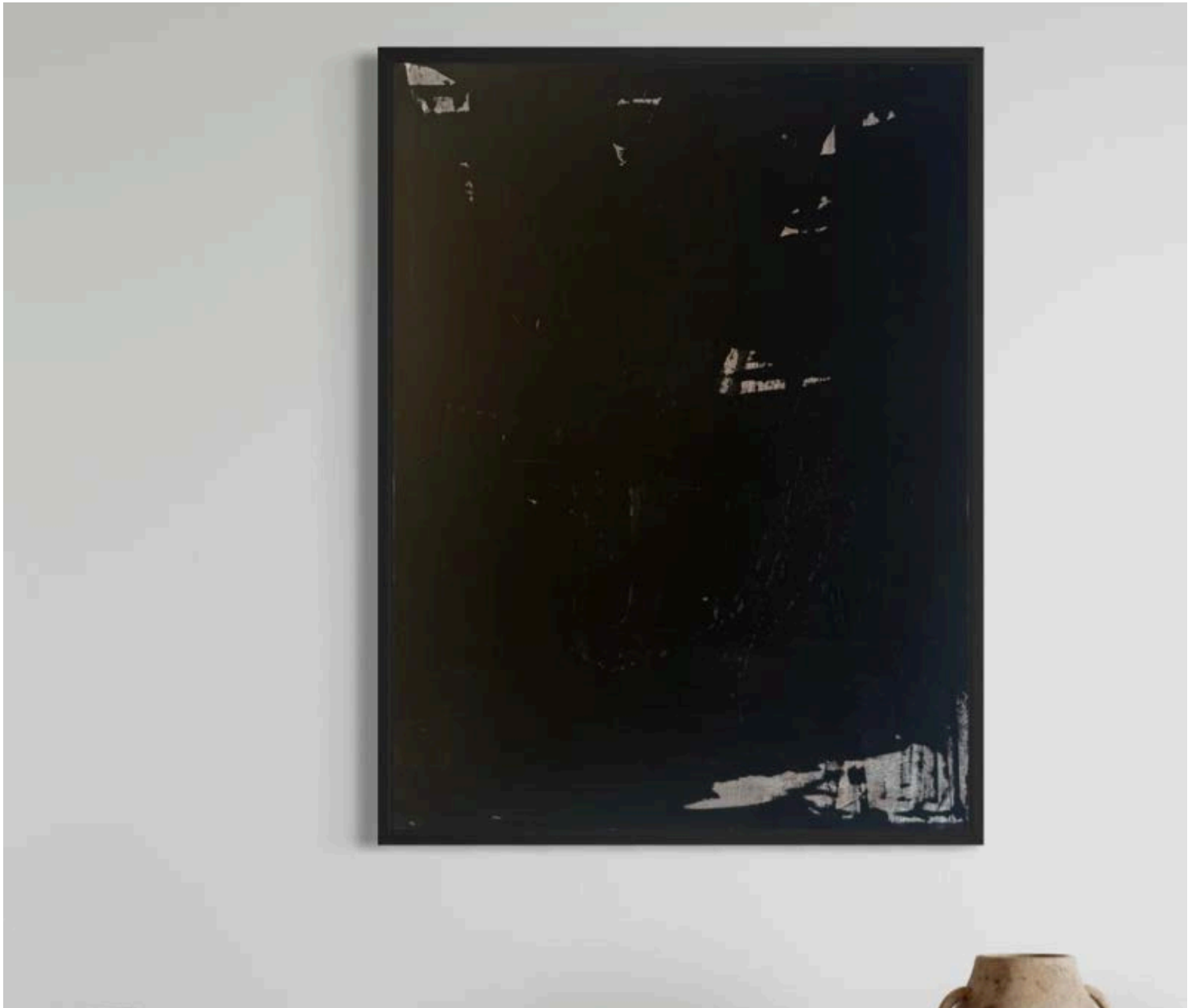
Latitude: Oku is a large-scale triptych, each panel measuring 48 × 60 inches, designed to create depth and quiet architectural presence within contemporary interiors. Rendered in saturated matte black with a restrained band of burnished bronze, the work builds atmosphere through layered texture, fine droplet application, and controlled surface excavation. The composition unfolds laterally, offering a sense of stillness and continuity across space while revealing subtle shifts in light over time. Acrylic and mixed media on canvas, 2026. Triptych priced at \$26,000 USD.

Glint 48 x 36 inches



Latitude: Glint is a 48 × 36 inch abstract work that captures a moment of ignition within restraint. A saturated matte black field anchors the composition, interrupted by scraped passages of burnished bronze that catch light in sharp, controlled flashes. Layered through fine droplet application, the surface reveals subtle tonal variation and depth over time. The contrast between density and interruption creates a quiet energy—contained, but active. Acrylic and mixed media on canvas, 2025. Priced at \$5,600 USD.

Ink 48 x 36 inches



Latitude: Ink is a 48 × 36 inch abstract work centered on the authority of black as both substance and atmosphere. A saturated matte field anchors the composition, built through layered texture, fine droplet application, and controlled surface excavation. Subtle tonal shifts emerge over time, while restrained passages of muted bronze appear along the edges, revealing depth without disrupting the surface. The result is a work that holds space through concentration rather than scale—dense, quiet, and fully resolved. Acrylic and mixed media on canvas, 2025. Priced at \$5,600 USD.

Sable 48 x 36 inches

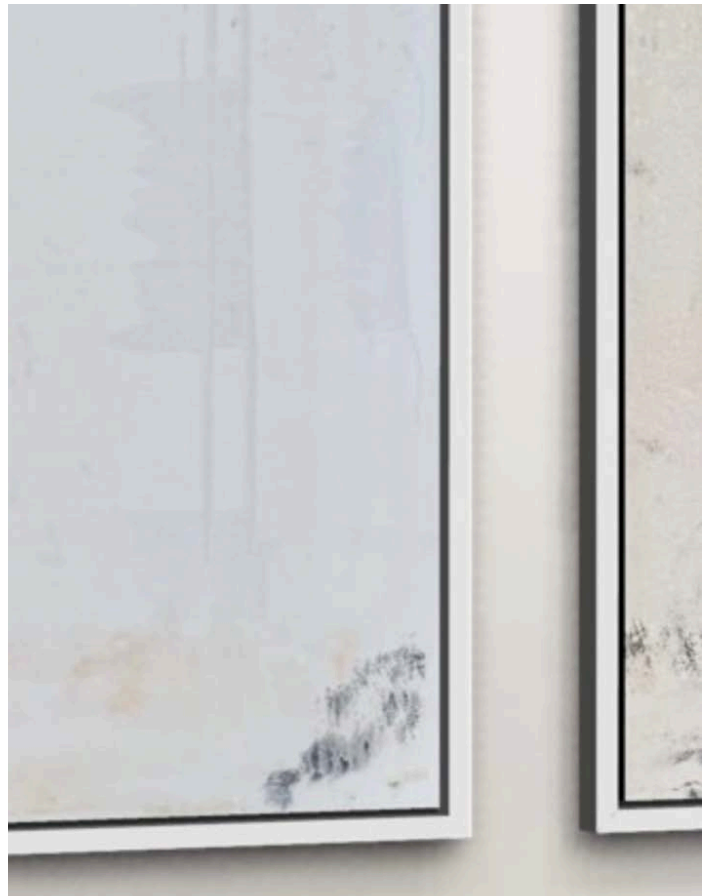
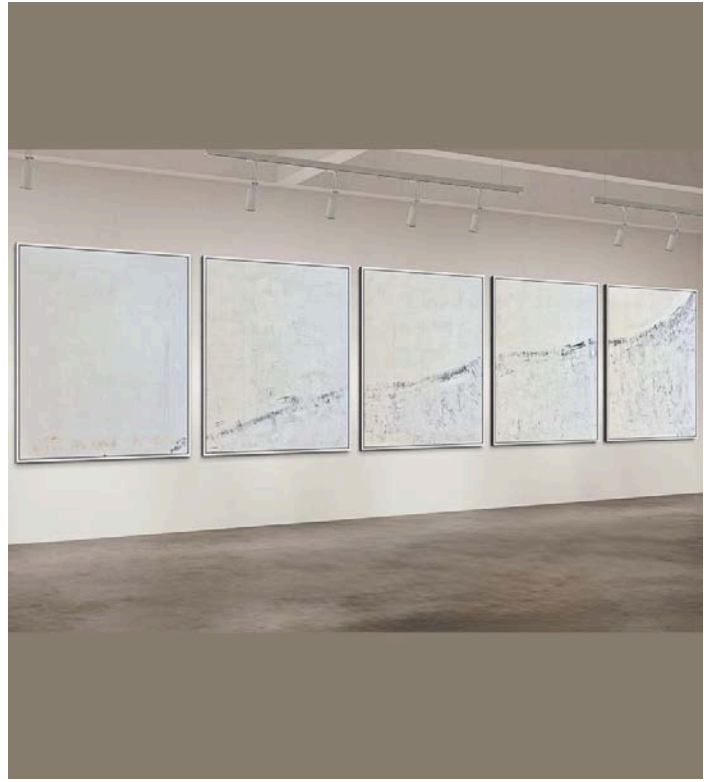


Latitude: Sable is a 48 × 36 inch abstract work that explores black as atmosphere rather than absence. A velvety matte field anchors the composition, built through layered texture and fine droplet application to create subtle tonal movement across the surface. Soft passages of muted bronze emerge within the upper register, while restrained areas of exposure along the lower edge reveal underlying structure without disrupting the calm. The result is a work defined by quiet depth and controlled presence—measured, composed, and immersive. Acrylic and mixed media on canvas, 2025. Priced at \$5,600 USD.

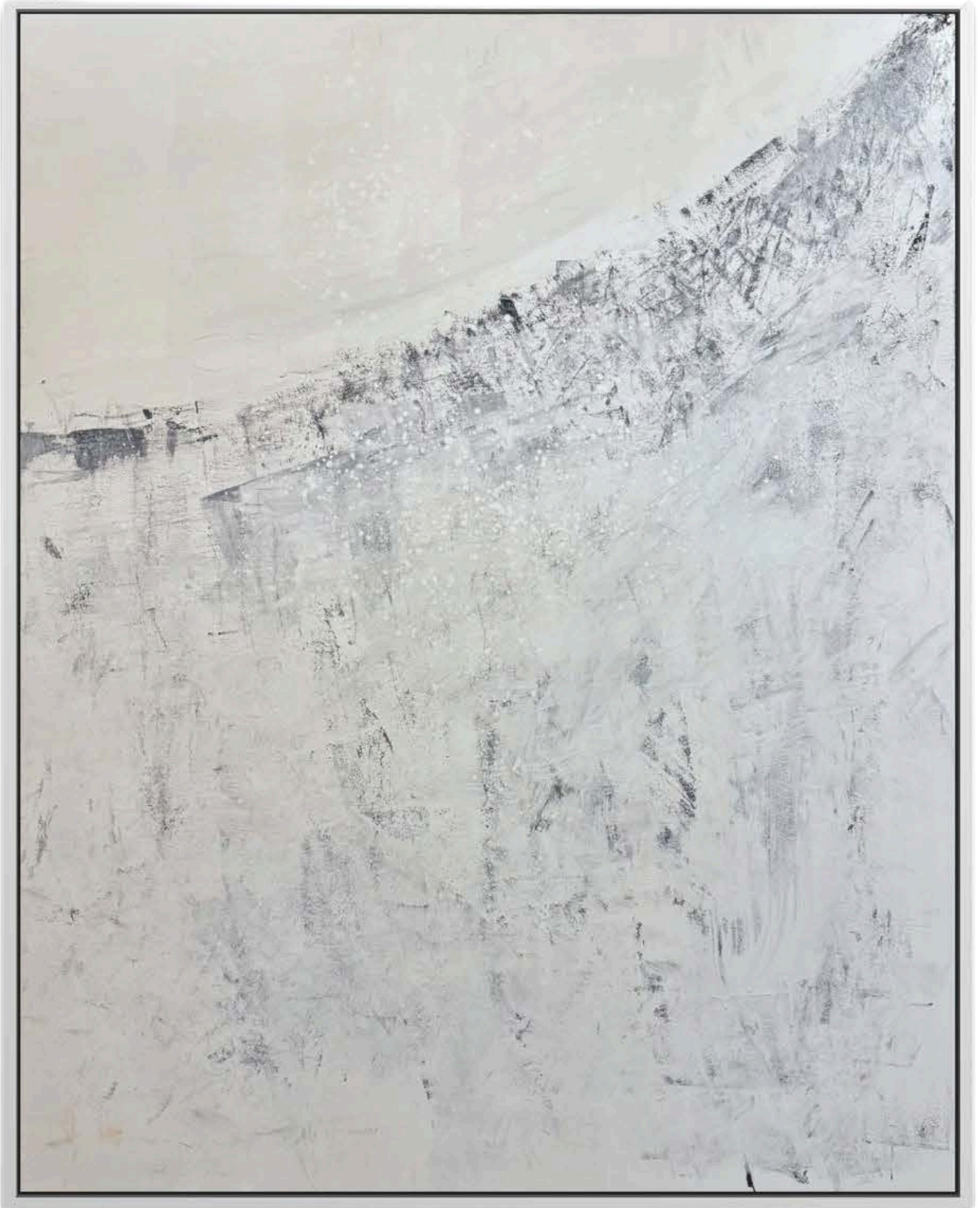
Arc 48 x 36 inches



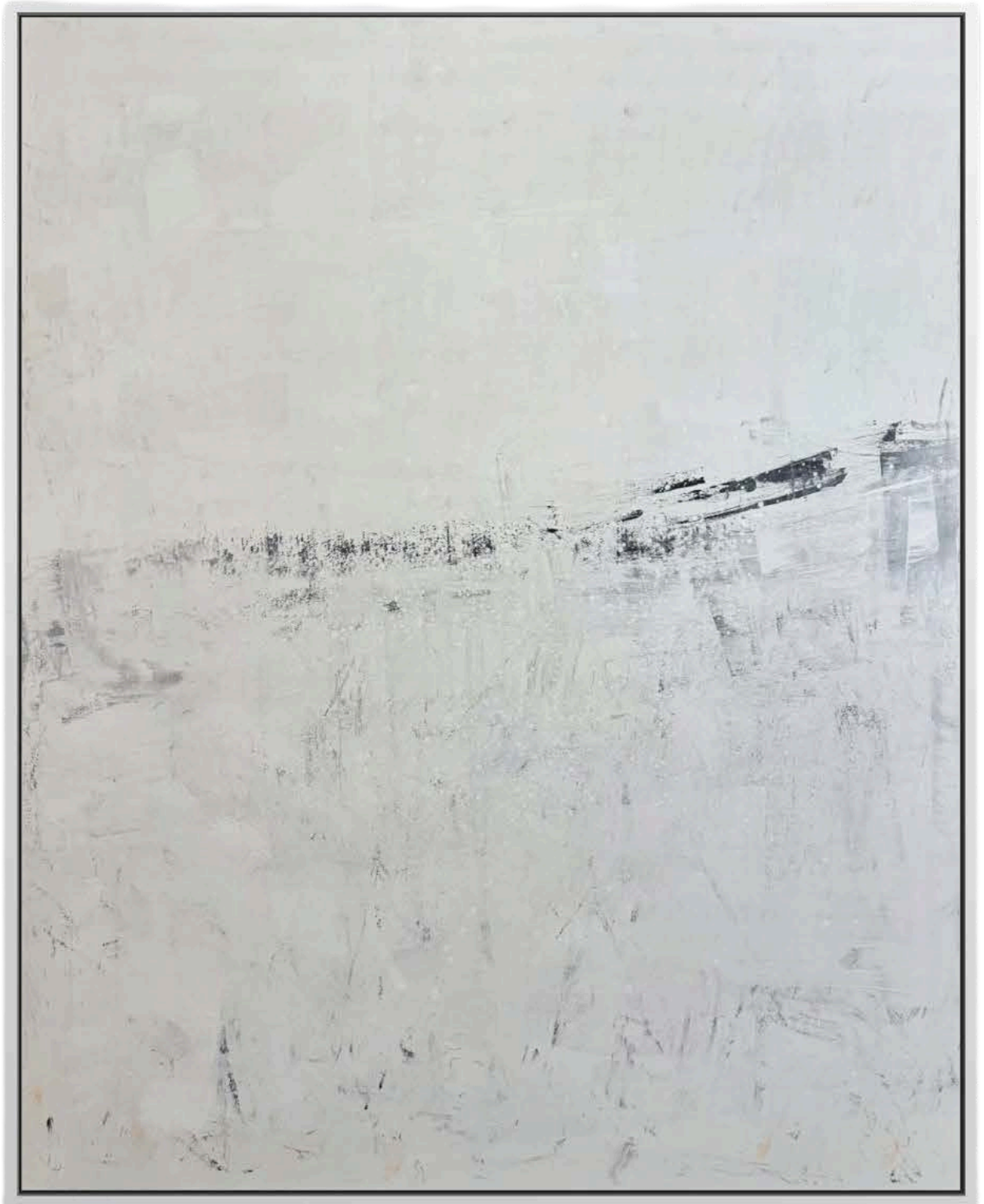
Latitude: Arc is a 48 × 36 inch abstract work that captures motion held within restraint. A saturated matte black field anchors the composition, built through layered texture and fine droplet application to create subtle tonal variation. Beneath the surface, a sweeping curvature introduces a sense of contained movement and directional force. Restrained passages of muted bronze emerge along the upper register, revealing depth without disrupting the composition's balance. The result is a work that holds energy internally—controlled, grounded, and quietly dynamic. Acrylic and mixed media on canvas, 2025. Priced at \$5,600 USD.

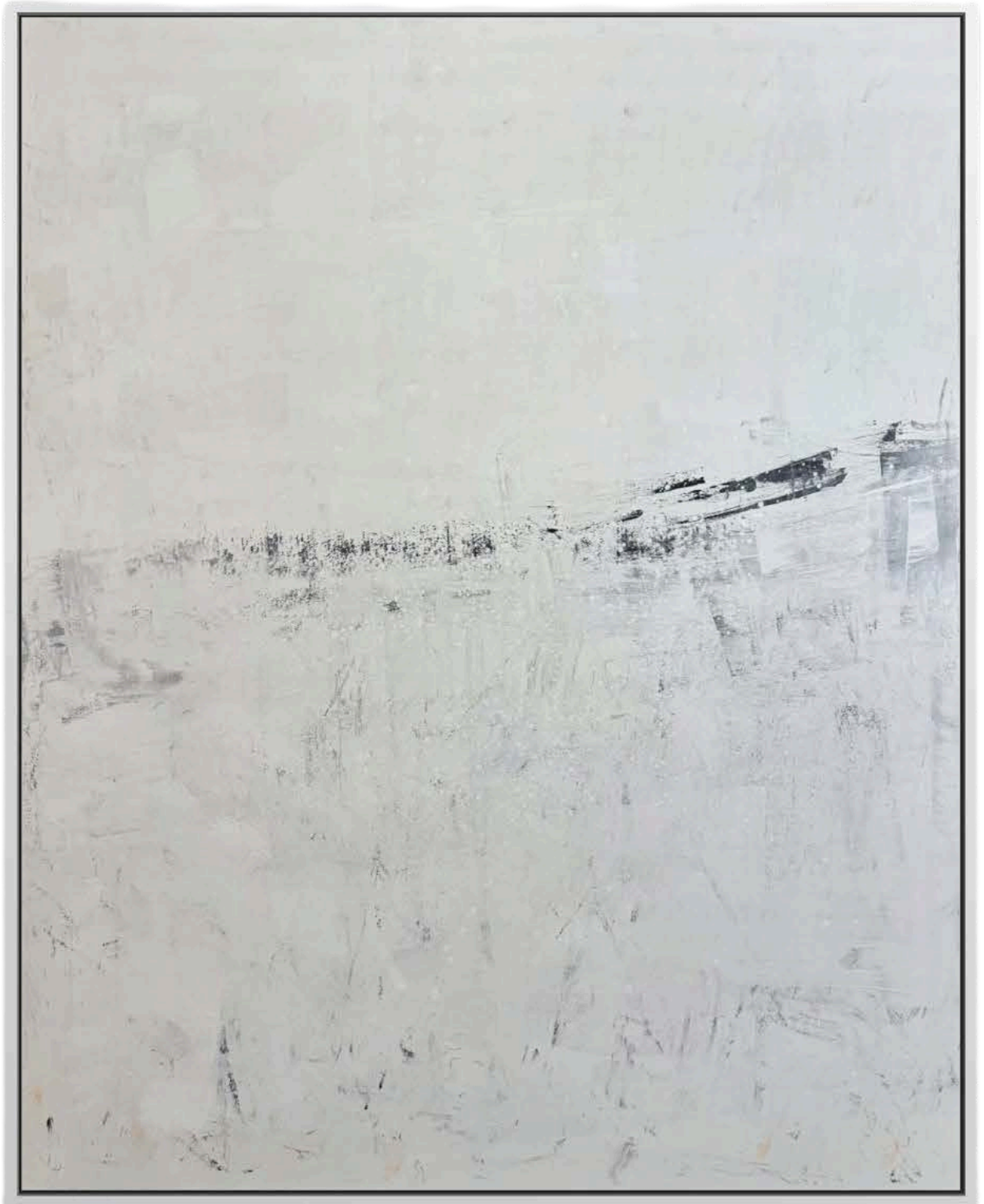


Tō — The Climb is a five-piece abstract series, each work measuring 48 × 60 inches, designed to bring scale and calm structure to contemporary interiors. Rendered in a restrained palette of deep black and soft off-white, the paintings use subtle texture and linear movement to suggest quiet forward motion. The works can be used individually or grouped, allowing flexibility across rooms while maintaining visual continuity. Acrylic on canvas, 2025. Complete set priced at \$22,000 USD.



Tō — The Climb is a five-piece abstract series, each work measuring 48 × 60 inches, designed to bring scale and calm structure to contemporary interiors. Rendered in a restrained palette of deep black and soft off-white, the paintings use subtle texture and linear movement to suggest quiet forward motion. The works can be used individually or grouped, allowing flexibility across rooms while maintaining visual continuity. Acrylic on canvas, 2025. Complete set priced at \$22,000 USD.

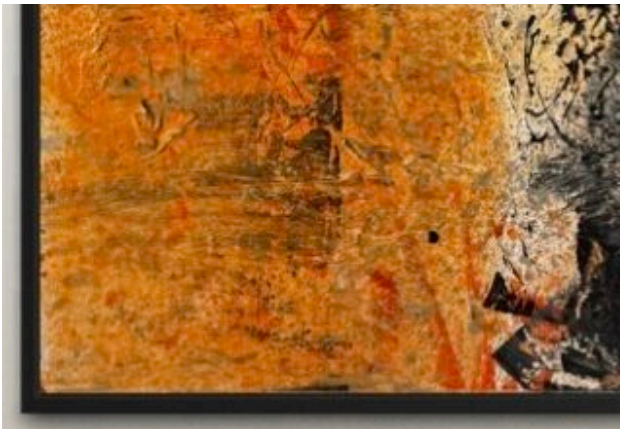
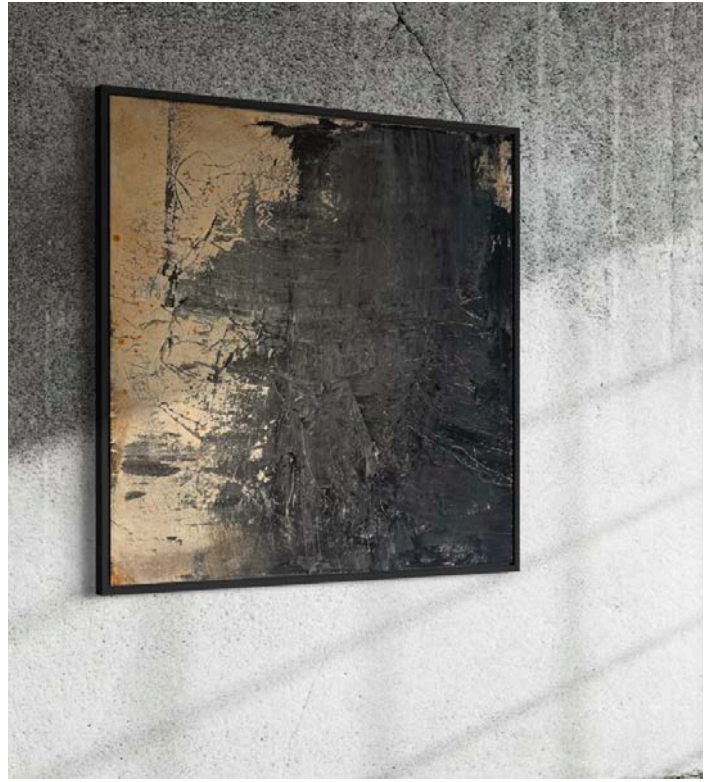
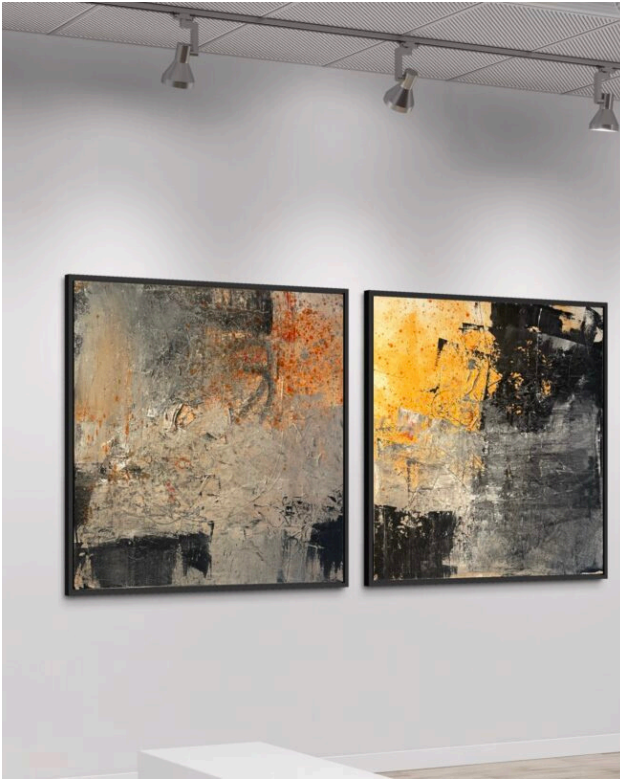












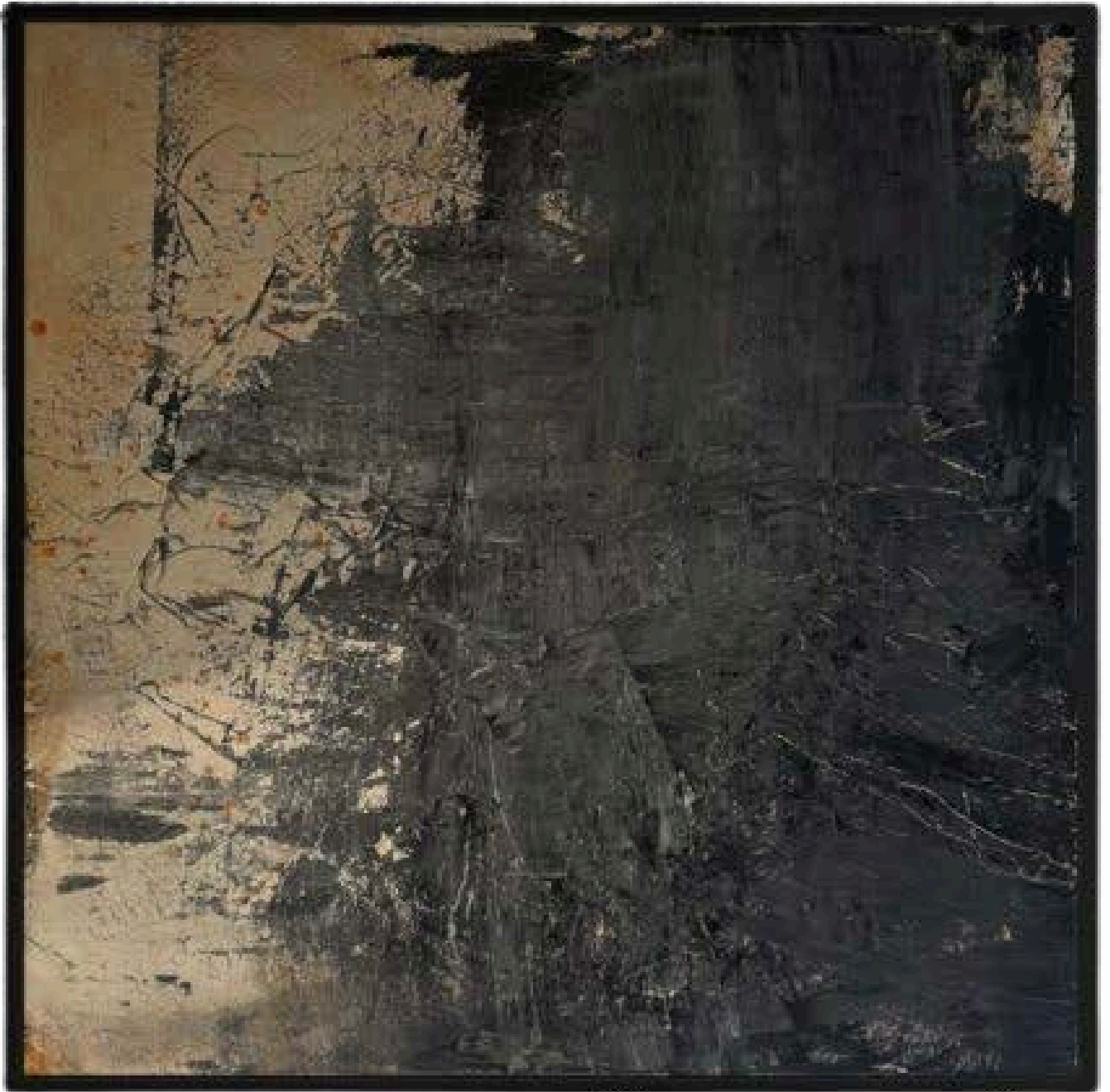
Persistent Prosecco is a series of individual abstract works, each measuring 48 × 48 inches, designed to add warmth, movement, and subtle lift to contemporary interiors. Built through layered pigment, scraped surfaces, and rain-softened textures, the paintings balance mineral greys, deep blacks, and glowing ochre tones to suggest renewal and steady momentum. Each work stands on its own or can be paired in small groupings, offering flexibility across rooms while maintaining a cohesive visual language. Acrylic on canvas, 2025. Individual works priced from \$6,800 to \$8,600 USD.

Brillare Diptych, two panels each 48 × 48 inches



Brillare is a two-panel diptych, each panel measuring 48 × 48 inches, created as part of the Persistent Prosecco series. The work moves from grounded slate greys and softened, rain-textured surfaces into luminous ochre, warm gold, and deep black, creating a dialogue between restraint and emergence. Subtle scraping reveals layered depth and momentum across both panels, allowing the pair to function as a unified statement or a strong focal point within a space. Acrylic on canvas, 2025. Diptych priced at \$8,600 USD.

Cinder 48 × 48 inches



Cinder is a single abstract work built through deep blacks, smoked charcoal, and subtle bronzed undertones revealed by scraping. Soft rain-textured layers move across the surface, allowing faint light to emerge within the darker field. The painting carries a quiet, grounded presence, offering depth and stillness while maintaining subtle movement.

Acrylic on canvas, 2025.

CURRENTLY PLACED

Ascend 48 × 48 inches



Ascend is a single abstract work formed through layered fields of ivory, mineral grey, soot, and warm ochre. Scraped textures rise through the surface while softened rain veils introduce movement and atmosphere, allowing light to emerge gradually from within the composition. The painting carries a sense of steady lift and quiet momentum, offering balance, depth, and intentional progression. Acrylic on canvas, 2025.

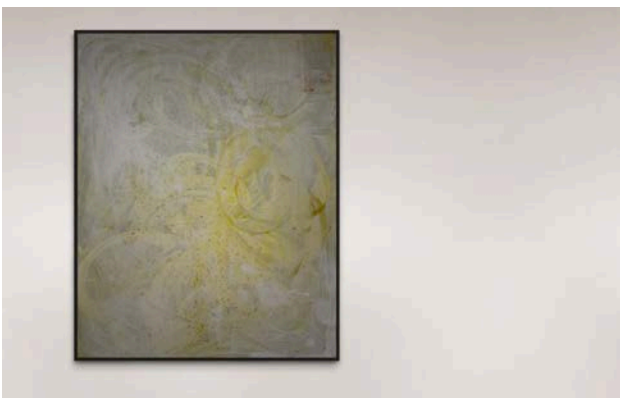
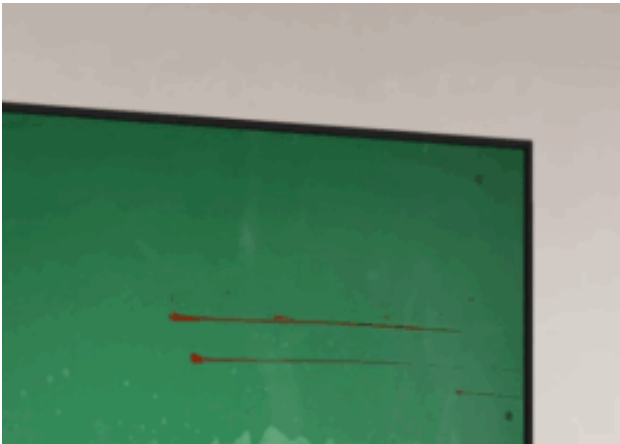
CURRENTLY PLACED

Auric 48 × 48 inches



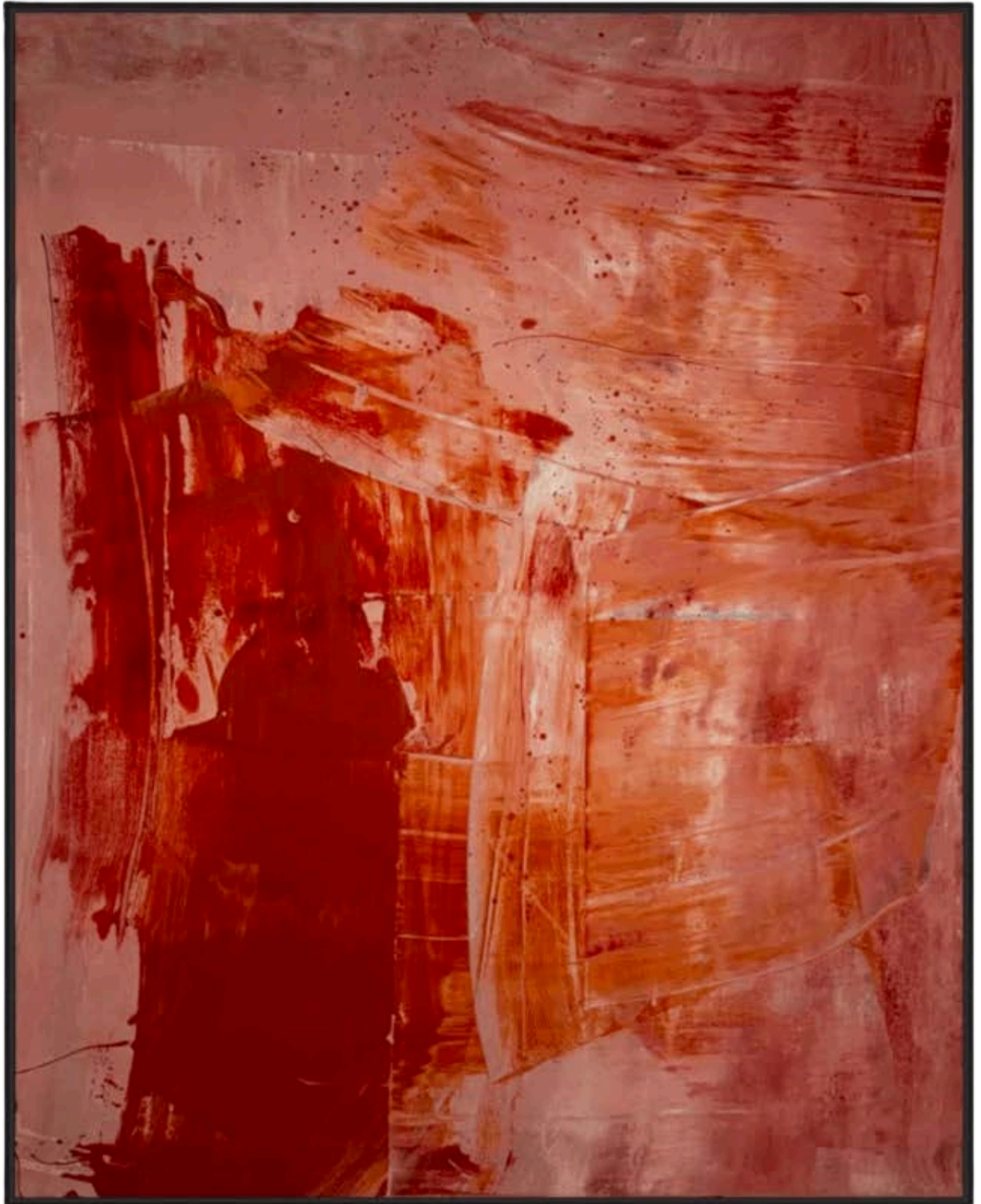
Auric is a single abstract work defined by citrine, pale gold, slate grey, and soft tangerine tones. Scraped layers establish structure while rain-textured veils introduce warmth and luminosity across the surface. The painting carries a radiant yet balanced presence, offering clarity, lift, and subtle energy well suited to contemporary interiors.

Acrylic on canvas, 2025.



Miles is a series of large-scale abstract works, each measuring 60 × 48 inches, designed to bring scale, depth, and atmosphere to contemporary interiors. Each painting translates a global city into sensation rather than imagery, using layered pigment, gesture, and texture to capture rhythm, temperature, and emotional residue. The works function individually or across multiple rooms, offering flexibility while maintaining a cohesive visual language. Acrylic on canvas. Individual works priced at \$9,600 USD.

Madrid, Spain 60 × 48 inches



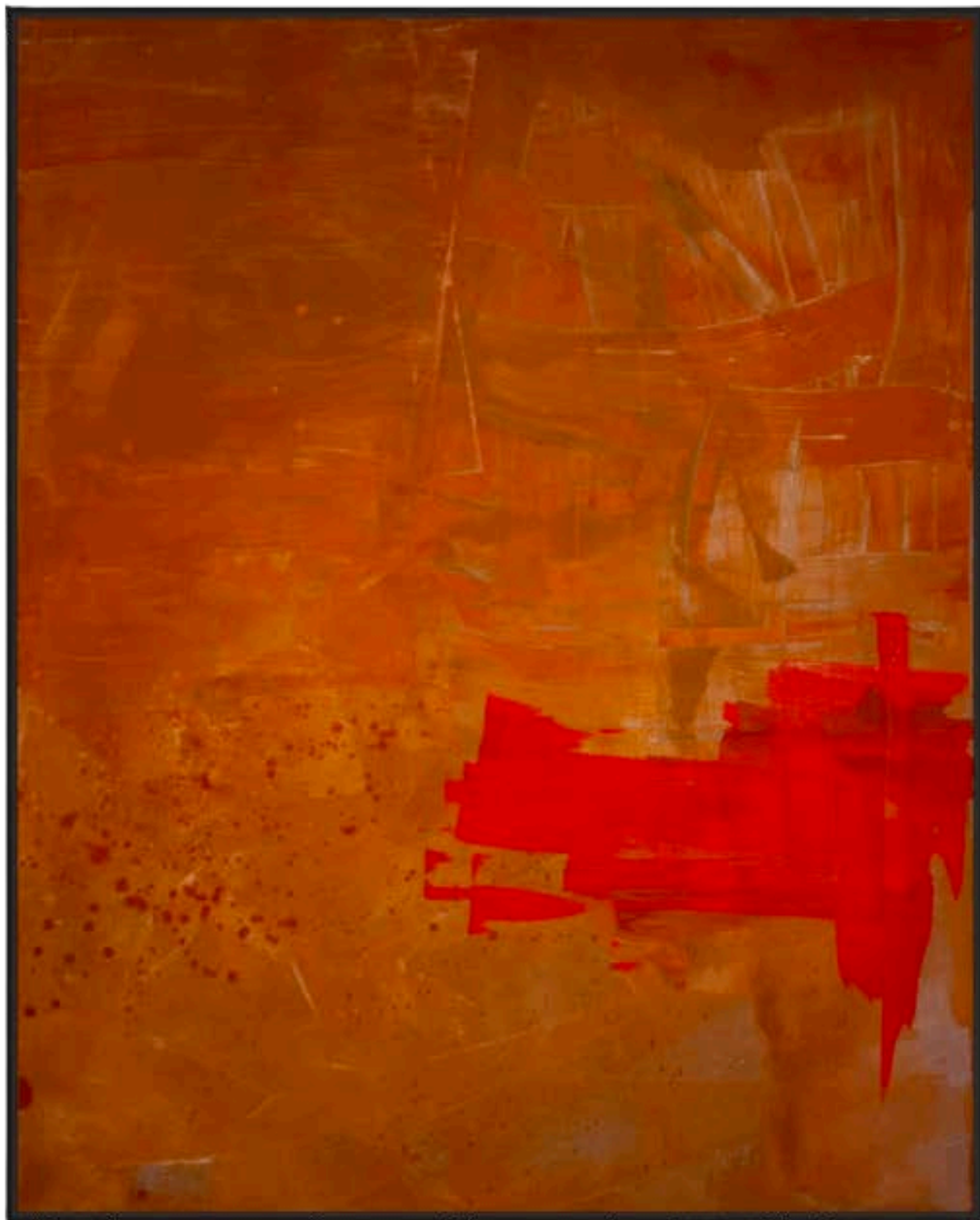
Madrid is a large-scale abstract work driven by deep reds layered with urgency and weight.

Thick pigment and gestural movement convey heat, density, and constant motion, capturing the emotional intensity and historical charge of the city. The surface carries abrasion and repetition, allowing passion and resilience to coexist within a single field.

Acrylic on canvas.

CURRENTLY PLACED

Cape Town, South Africa 60 × 48 inches



Cape Town is a large-scale abstract work dominated by a charged orange field punctuated by a striking red interruption. Layered pigment and subtle surface variation convey heat, tension, and resilience, reflecting the city's dramatic contrasts between land, sea, and history. The composition balances intensity with endurance, allowing energy and structure to coexist within a single, breathing surface.

Acrylic on canvas.

Nassau, Bahamas 60 × 48 inches



Nassau is a large-scale abstract work composed of soft teals, misted blues, and atmospheric whites. Layered pigment and fine splatters create a sense of drifting movement, evoking ocean air, slowed time, and the quiet depth of coastal life. The surface balances calm and subtle complexity, allowing lightness and reflection to settle into a sustained, immersive field. Acrylic on canvas.

New York, United States 60 × 48 inches



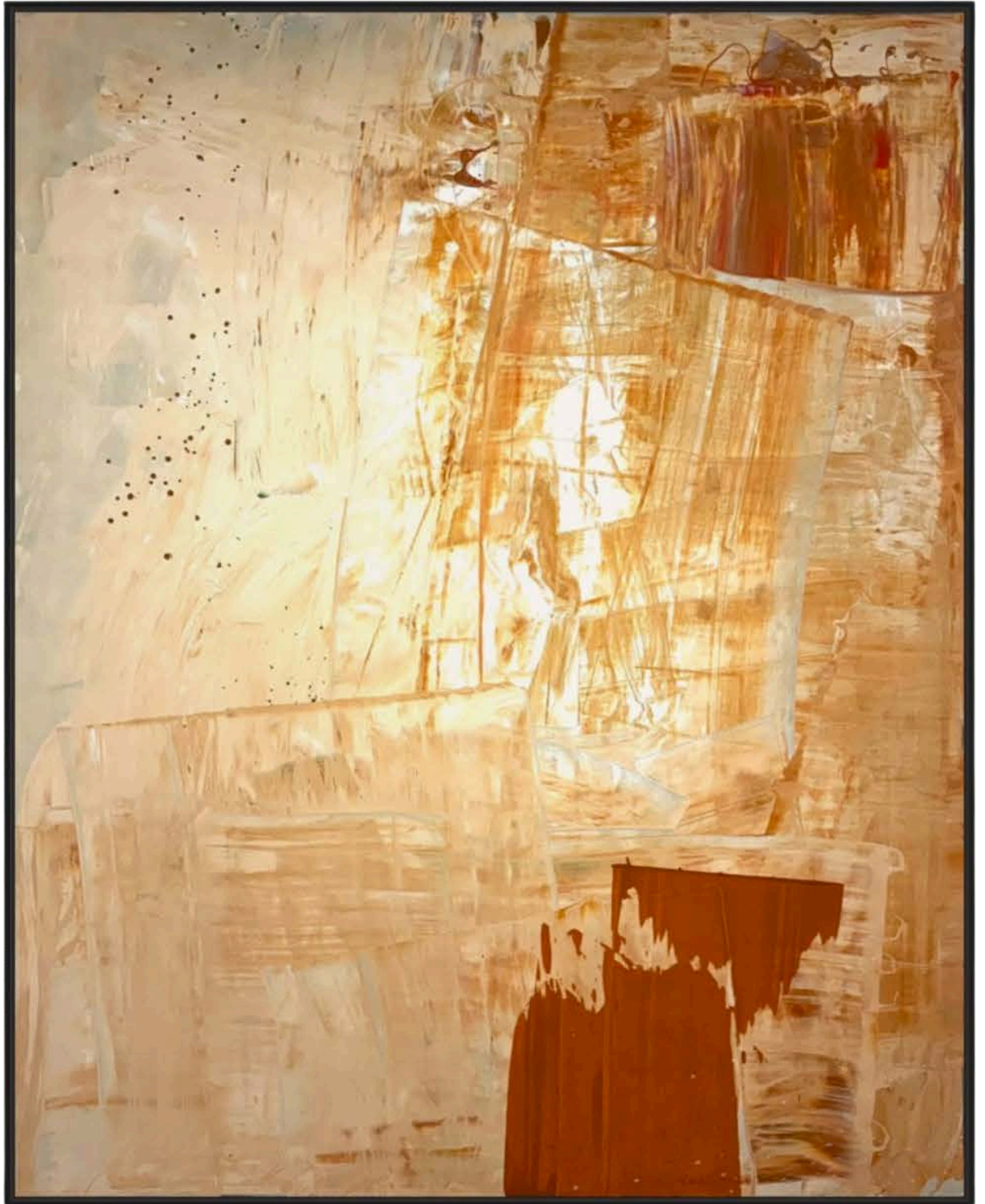
New York is a large-scale abstract work built from dense, near-black layers marked by abrasion and muted flashes of light. Scratched and scumbled textures create a restless surface, reflecting the city's compression, intensity, and constant motion. The composition balances heaviness with brief moments of emergence, capturing ambition, friction, and the fleeting glint of possibility. Acrylic on canvas.

Paris, France 60 × 48 inches



Paris is a large-scale abstract work rendered in pale yellows, softened whites, and atmospheric creams. Light, restrained gestures and layered glazes create a drifting surface that evokes quiet luminosity and suspended time. The composition balances delicacy and depth, capturing the city's intimacy, memory, and understated elegance through subtle movement and tonal nuance. Acrylic on canvas.

Palermo, Italy 60 × 48 inches



Palermo is a large-scale abstract work built from sunbaked ochres, muted earth tones, and heavily worked surfaces. Scraped textures and rough edges create a tactile composition that reflects heat, age, and accumulated history. The painting balances erosion and warmth, capturing a sense of endurance where beauty and wear coexist within a grounded, ancient presence. Acrylic on canvas.

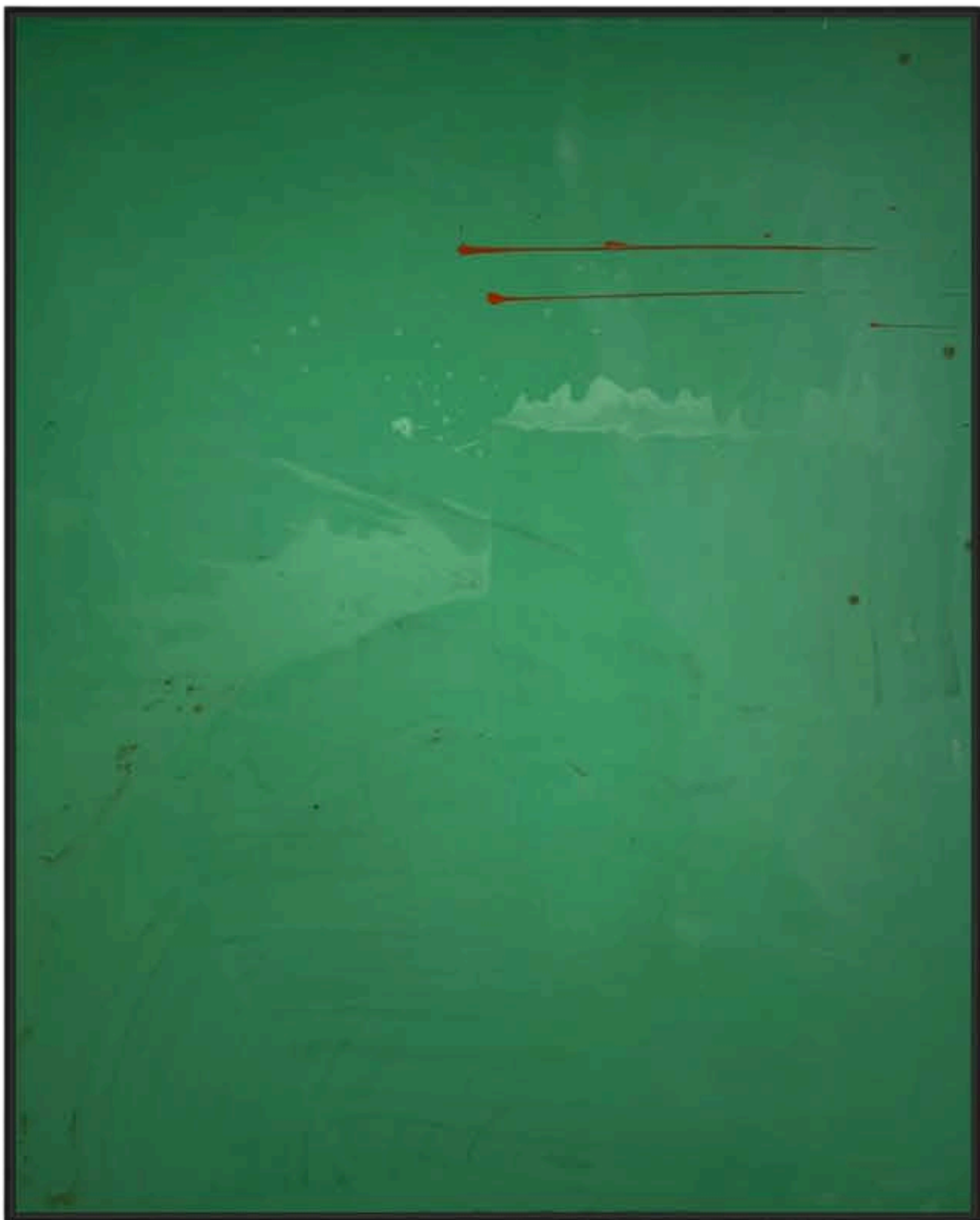
Tokyo, Japan 60 × 48 inches



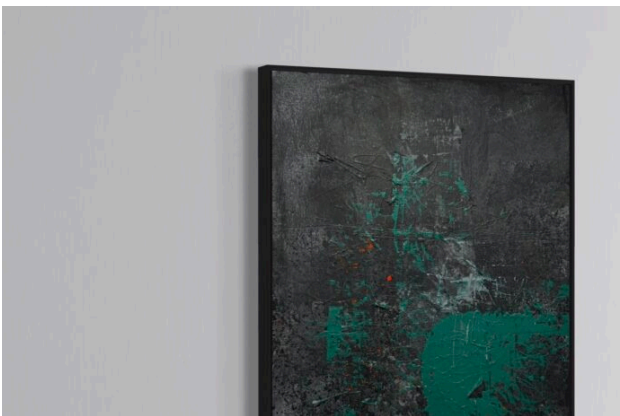
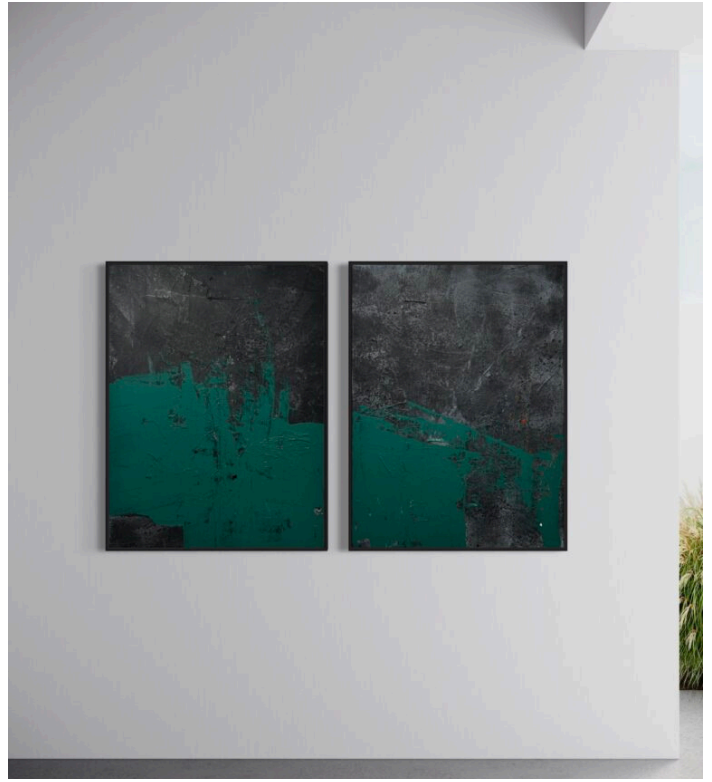
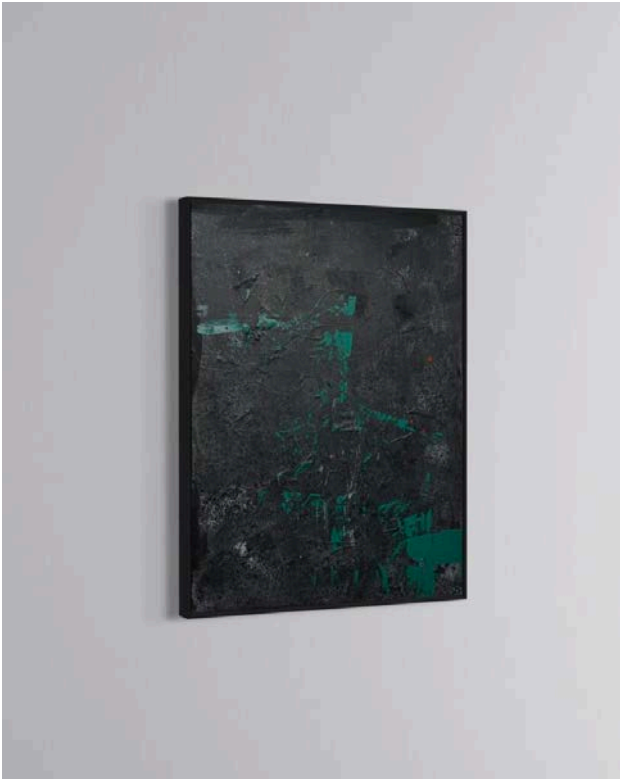
Tokyo is a large-scale abstract work defined by soft whites and delicate coral pink gestures dispersed across an open, restrained surface. Light sprays and controlled movement evoke transience, balance, and quiet precision, reflecting the coexistence of serenity and kinetic energy. The composition emphasizes space and intention, allowing subtle marks to carry atmosphere and emotional clarity. Acrylic on canvas.

CURRENTLY PLACED

Cork, Ireland 60 × 48 inches



Cork is a large-scale abstract work immersed in rich, layered greens softened by misted tonal shifts. Subtle texture and restrained movement evoke landscape, memory, and quiet resilience, allowing the surface to feel both grounded and expansive. The composition balances saturation with calm, closing the series with a sense of continuity, endurance, and softened light. Acrylic on canvas.



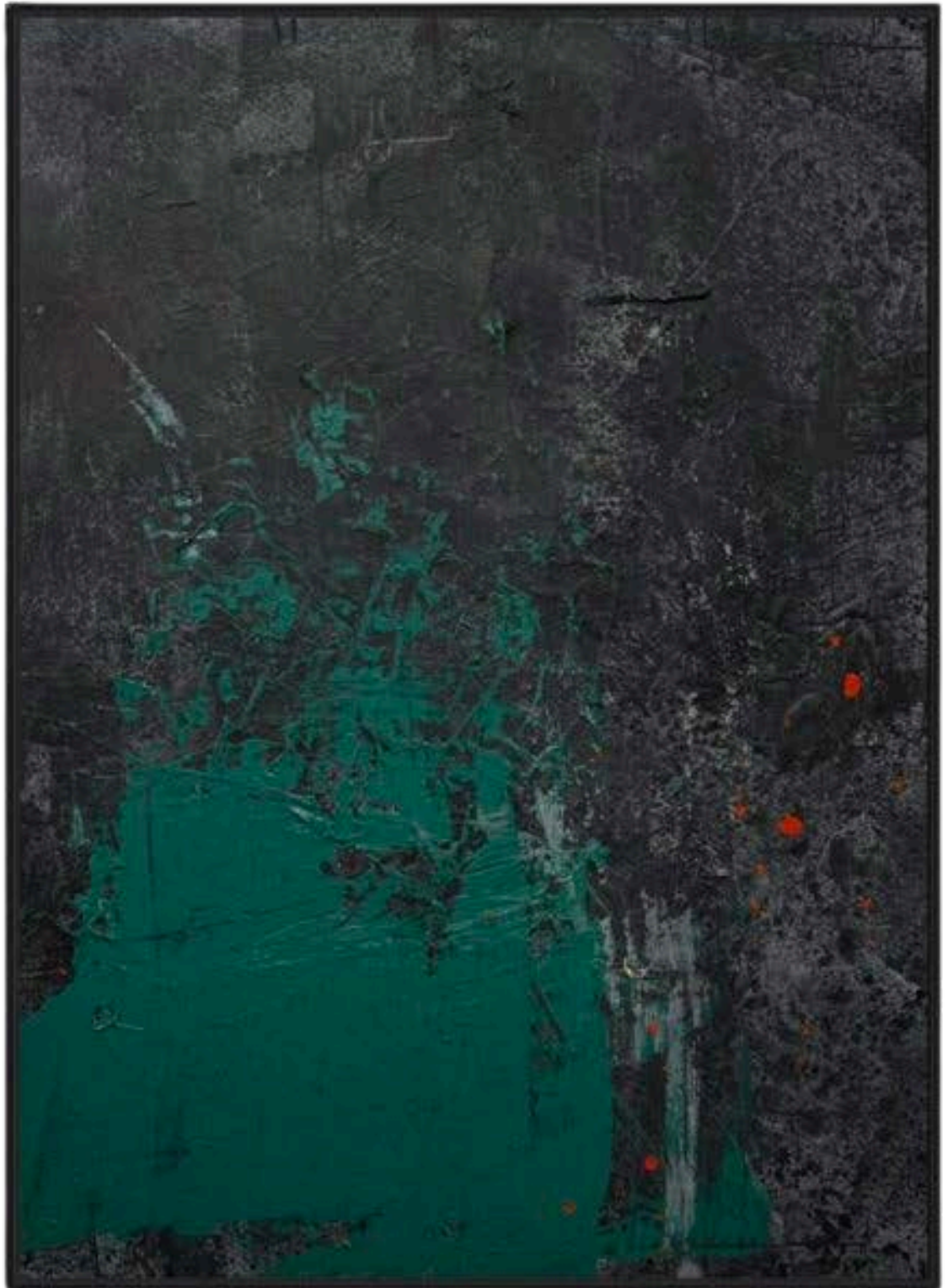
Ash and Algae is a series of abstract works exploring transformation through pressure, built from mineral blacks and saturated algae greens. Layered acrylic surfaces accumulate like sediment or cooled magma, scraped and reworked to reveal fracture, erosion, and renewal. The paintings evoke scorched terrain overtaken by life, allowing imbalance, residue, and movement to serve as structure. The series balances density and emergence, presenting resilience as an evolving process rather than a resolved state. Acrylic on canvas, 2025.

Resurge Seam Diptych, two panels each 48 × 48 inches (96 × 48 inches total)



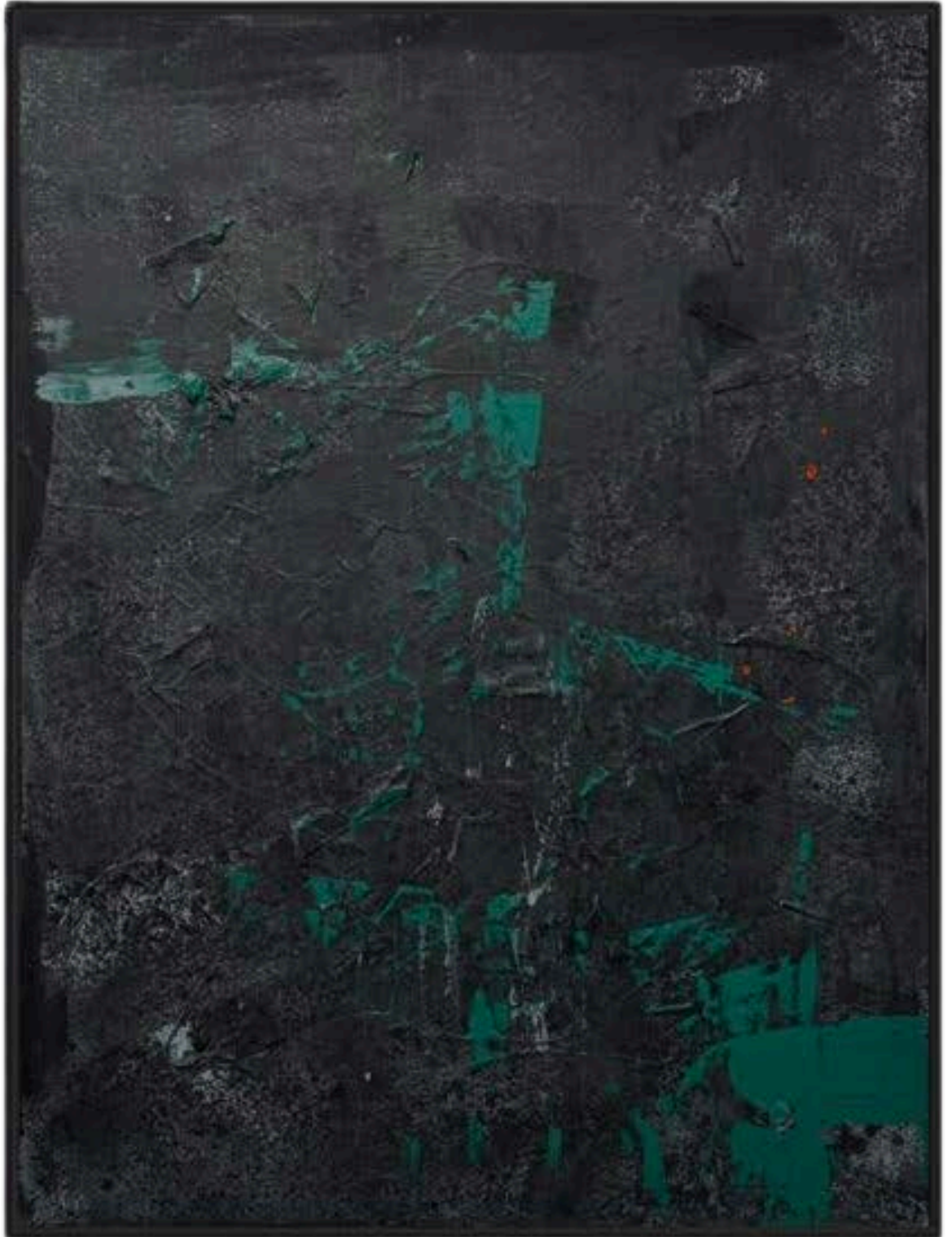
Resurge Seam is a large-scale diptych anchoring the Ash and Algae series, composed of dense graphite-black surfaces interrupted by emergent algae-green movement. Layered acrylic and controlled scraping create a sense of tectonic pressure and gradual release, allowing fracture and regrowth to coexist. Subtle mineral traces punctuate the surface, reinforcing the work's balance between erosion and insistence. Acrylic on canvas, 2025.

Seepform 48 × 36 inches



Seepform is a single abstract work defined by upward movement through dense, darkened terrain. Saturated algae green rises through layered black and charcoal surfaces, suggesting slow vertical growth driven by pressure rather than force. Subtle textural fractures and mineral-toned flecks add depth, reinforcing a sense of quiet persistence and internal momentum. Acrylic on canvas, 2025.

Spores 48 × 36 inches



Spores is a single abstract work centered on latent energy and early emergence. Algae-toned gestures surface through layered black and charcoal fields, punctuated by subtle abrasions and crater-like markings. Small bursts of mineral orange and deep green suggest quiet activation beneath the surface, capturing growth at its most intimate and unseen.

Acrylic on canvas, 2025.

Tide 48 × 36 inches



Tide is a single abstract work defined by horizontal movement and layered flow. Algae green and softened grey tones drift across dense black fields, creating a sense of sediment, recession, and return. Translucent washes and restrained mineral accents introduce rhythm and tension, capturing motion held between advance and retreat. Acrylic on canvas, 2025.

Abyss Thread 48 × 36 inches



Abyss Thread is a single abstract work defined by depth, density, and restrained emergence. Darkened, compressed surfaces are interrupted by a partially obscured green form that feels suspended within the black field. Subtle abrasions and mineral-toned flecks suggest pressure, passage, and tenuous connection, allowing the composition to hold tension without resolution. Acrylic on canvas, 2025.

Emergent Vein 48 × 36 inches



Emergent Vein is a single abstract work centered on breakthrough and ascent. A saturated green form rises through fractured black and mineral-toned layers, creating a sense of pressure giving way to movement. Subtle erosion and tonal abrasion reinforce the feeling of inevitable emergence, allowing restraint and momentum to coexist within the surface.



Aurora is a series of abstract works centered on light, transition, and quiet emergence. Built from muted blush, warm ochre, and diffused gold tones, the paintings use layered acrylic, halo-like accents, and softened drip textures to evoke the fleeting atmosphere of dawn. Surfaces remain restrained and luminous, allowing texture and tone to suggest movement without urgency. The series captures the moment between stillness and awakening, presenting light as a gradual, felt experience rather than a fixed image.

Solace Break Six-panel work, six panels each 48 × 24 inches (288 × 24 inches total)

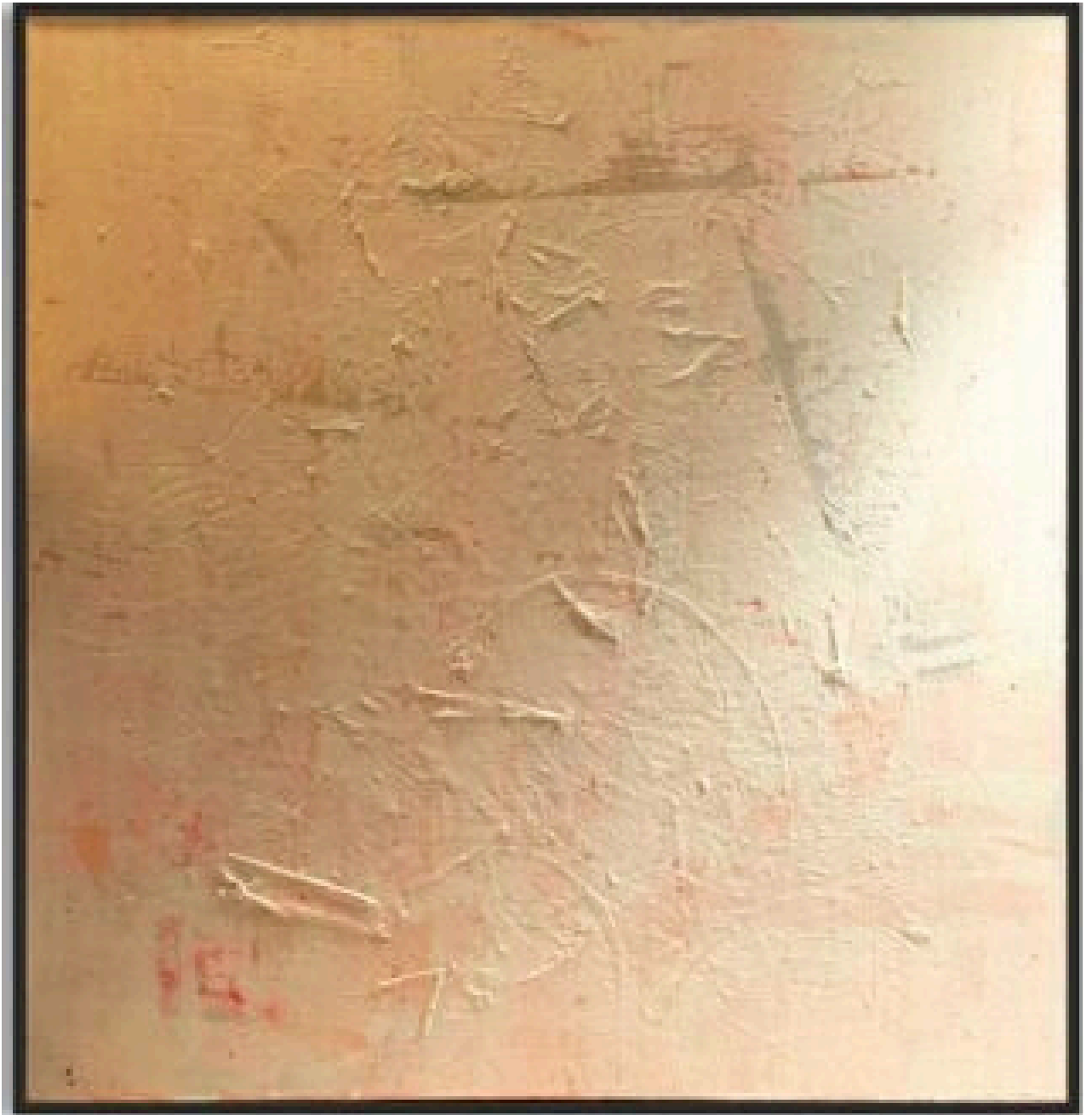


Solace Break is a large-scale, horizontal composition anchoring the Aurora series. Warm ochre, muted blush, and softened grey tones move across six connected panels, forming a continuous horizon of light and diffusion. Layered acrylic, subtle halo-like accents, and fine drip textures create a sense of gradual emergence, allowing stillness and motion to coexist.

The work captures dawn as a shifting continuum rather than a fixed moment.

Acrylic on canvas, 2025.

Elysian Dawn 48 × 48 inches



Elysian Dawn is a single abstract work capturing the gentle emergence of first light. Soft blush, diffused ivory, and warm peach tones are layered to create a luminous surface that shifts gradually rather than declares itself. Halo-like accents and fine drip textures introduce subtle movement, allowing texture and tone to suggest the quiet unfolding of morning.

Acrylic on canvas, 2025.

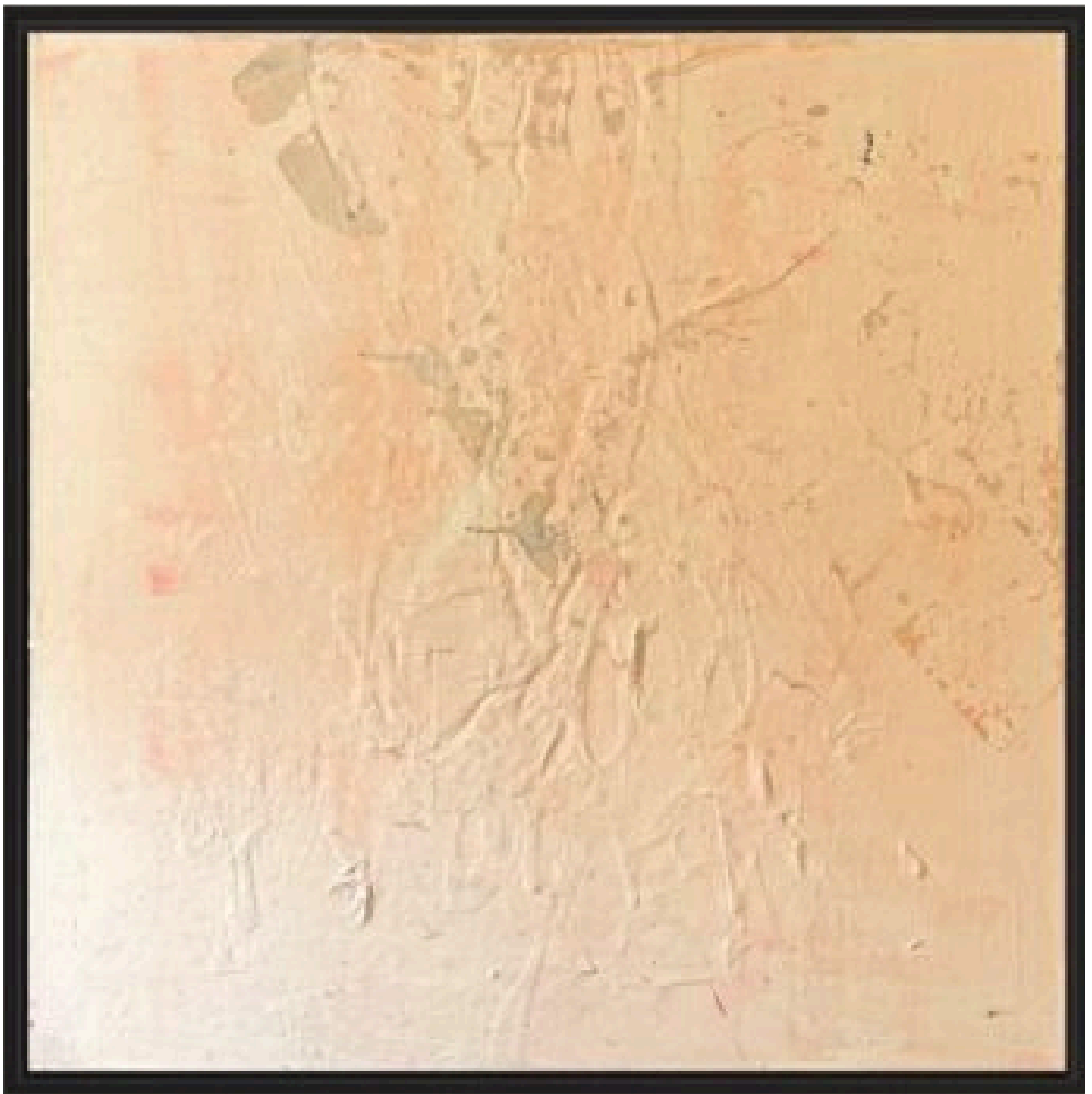
Vesper Glow 36 × 48 inches



Vesper Glow is a single abstract work situated in the threshold between night and morning. Soft blush tones emerge from darker undercurrents, creating a gradual transition from depth into light. Halo-like accents and fine drip textures introduce restrained movement, allowing tone and surface to convey the slow dissolution of twilight. Acrylic on canvas, 2025.

CURRENTLY PLACED

Brisa 24 × 24 inches



Brisa is a small-scale abstract work capturing the sensation of a gentle morning breeze. Soft blush, pale ivory, and warm neutral tones are layered with restrained texture, allowing subtle movement to emerge across the surface. Halo-like accents and fine drip marks introduce lightness and air, distilling the Aurora series into a quiet, intimate moment of transition. Acrylic on canvas, 2025.

CURRENTLY PLACED

Halcyon Rise 24 × 24 inches



Halcyon Rise is a small-scale abstract work capturing the suspended moment just before full daylight. Soft blush, pale peach, and diffused grey tones blend across a luminous surface, allowing texture and subtle tonal shifts to suggest quiet elevation. Halo-like accents and fine drip marks introduce restrained movement, holding the work between stillness and transformation. Acrylic on canvas, 2025.



The Linen Series is a collection of abstract works focused on restraint, texture, and quiet variation. Using muted whites, soft greys, and minimal mandarin orange accents, the paintings rely on layered acrylic, subtle craquelure, halo-like forms, and fine drip textures to create depth within a minimal palette. Surface and imperfection act as structure, allowing calm compositions to hold evidence of time, material response, and controlled disruption.

Especially suited to minimal, neutral interiors and modern residential staging..

Acrylic on canvas, 2025.

Oyster Sheen 48 × 60 inches



Oyster Sheen is a large-scale abstract work defined by muted whites, soft greys, and a luminous, layered surface. Subtle craquelure, halo-like forms, and fine drip textures create quiet movement across the composition, while restrained mandarin orange accents introduce warmth and contrast. Texture functions as the primary structure, allowing calm and disruption to coexist within a refined, minimal palette. Acrylic on canvas, 2025.

Soft Awakening Diptych, two panels each 36 × 48 inches (72 × 48 inches total)



Soft Awakening is a two-panel abstract work defined by muted whites, soft greys, and gently layered texture. Subtle craquelure, halo-like accents, and fine drip marks create a sense of quiet rhythm and transition across both panels. Restrained mandarin orange accents introduce warmth, allowing calm, renewal, and controlled movement to unfold across the surface. Acrylic on canvas, 2025.

Pure Layers 36 × 48 inches



Pure Layers is a single abstract work centered on depth through restraint. Muted whites, soft creams, and subtle greys are built up in layered acrylic, allowing delicate craquelure and fine drip textures to reveal underlying structure. Minimal mandarin orange accents punctuate the surface, introducing quiet energy within an otherwise calm, minimal composition. Acrylic on canvas, 2025.

Fresh Patina 36 × 48 inches

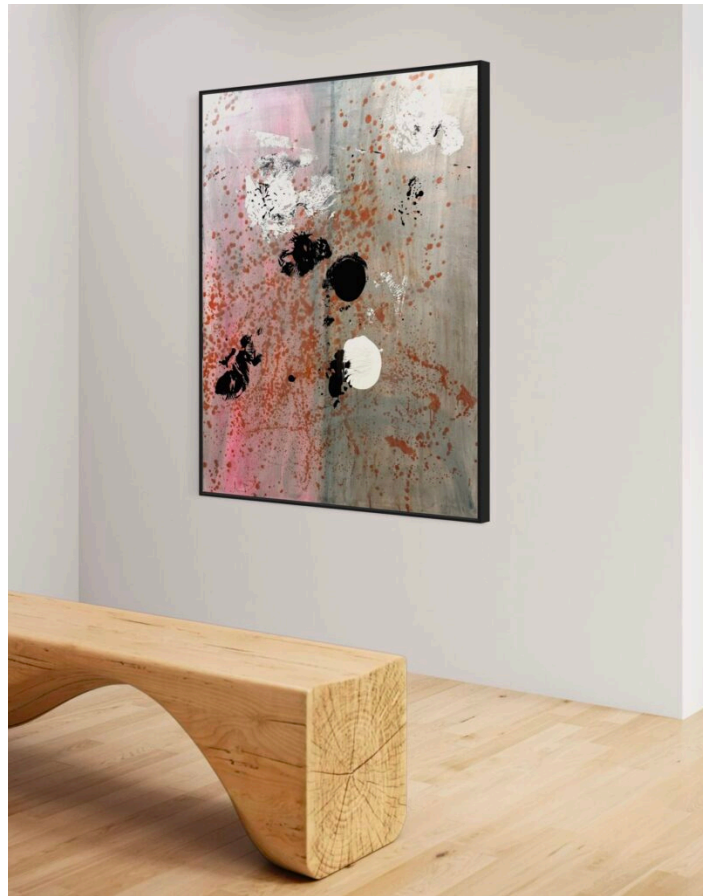


Fresh Patina is a single abstract work focused on erosion and renewal. Muted whites and soft greys form a weathered surface shaped by delicate craquelure and fine drip textures. Subtle halo-like forms and restrained mandarin orange accents introduce warmth, allowing aged texture and quiet transformation to coexist within a minimal composition. Acrylic on canvas, 2025.

White Bloom 36 × 48 inches



White Bloom is a single abstract work centered on emergence and quiet growth. Layered whites and soft greys unfold across the surface with subtle craquelure and fine drip textures, creating a sense of organic expansion. Minimal mandarin orange accents introduce warmth and vitality, allowing restraint and renewal to coexist within a calm, minimal composition. Acrylic on canvas, 2025.



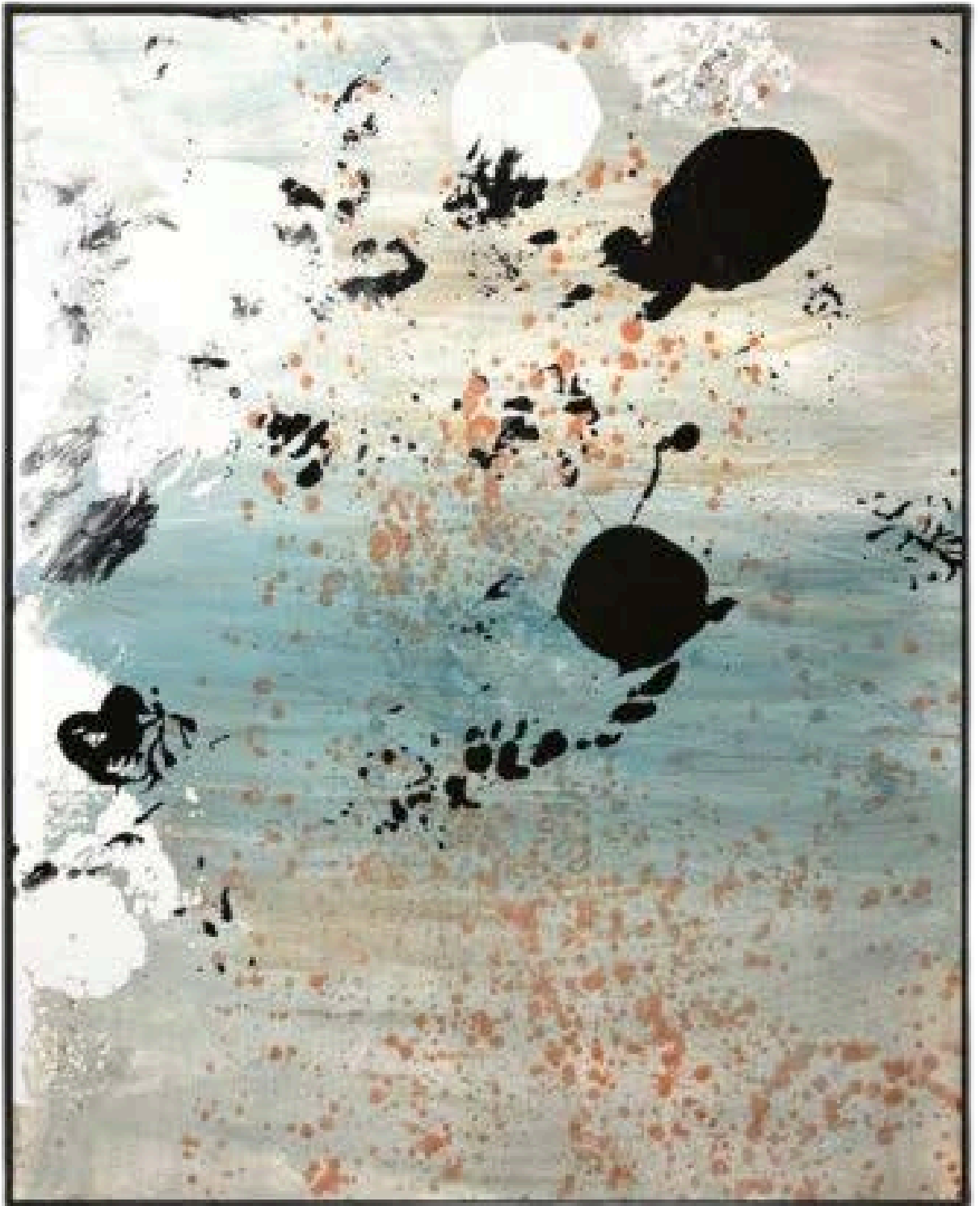
Cotton Candy Madagascar is a series of abstract works exploring animal movement, instinct, and environmental interaction through gesture and contrast. Monochrome fields are activated by energetic orange accents and layered texture, creating compositions that suggest spontaneity, motion, and adaptation. Rather than depicting animals directly, the works translate wildlife behavior into abstract rhythm, reflecting coexistence, change, and resilience within shifting ecosystems. Acrylic on canvas, 2024.

Ephemeral Traces 48 × 60 inches

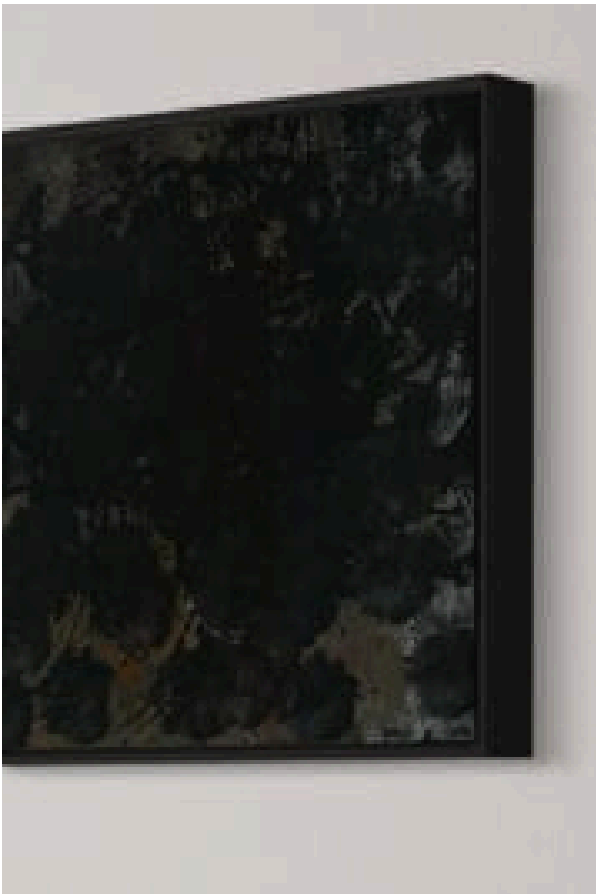
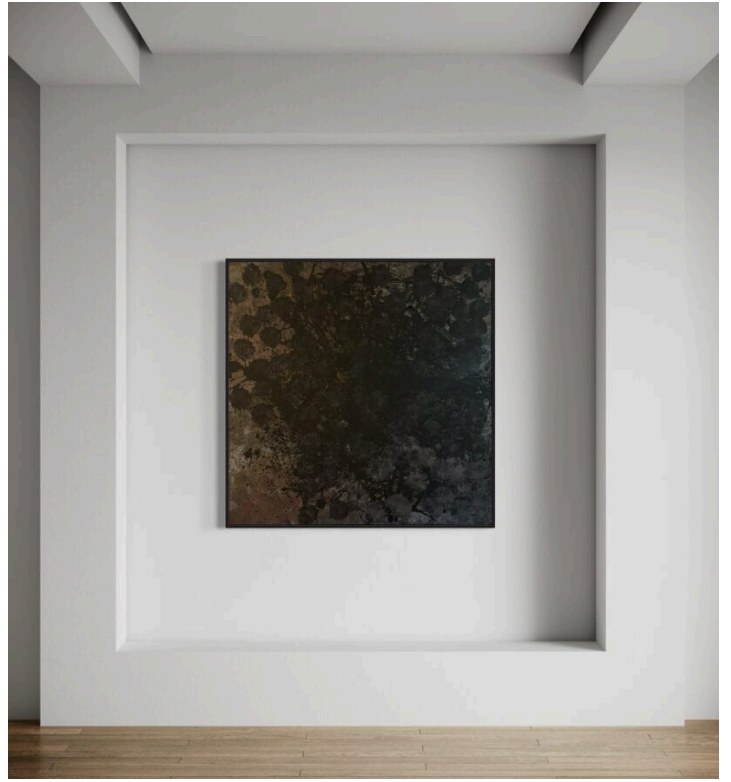


Ephemeral Traces is a large-scale abstract work centered on movement, memory, and fleeting presence. Soft monochrome fields are activated by energetic orange gestures and layered brushwork, suggesting motion that appears and dissolves without warning. Rather than depicting form directly, the composition evokes wildlife through rhythm and trace, allowing spontaneity and imagination to guide the surface. Acrylic on canvas, 2024.

Kawa Yūsei 48 × 60 inches



Kawa Yūsei is a large-scale abstract work exploring play, stillness, and spontaneous movement. Soft monochrome fields are layered with fluid blue tones and subtle brown gestures, creating a balance between calm atmosphere and lively interruption. The composition suggests animal presence through rhythm and motion rather than form, allowing moments of joy and unpredictability to surface within a tranquil setting. Acrylic on canvas, 2024.



Sow Series is a body of abstract works centered on effort, persistence, and physical force expressed through repetitive circular gesture. Dense fields of black and earthen tones are punctuated by sharp accents of orange and pink, creating compositions that convey tension, pressure, and release. Rather than illustrating growth, the works translate labor and resistance into rhythm and motion, reflecting persistence as action rather than outcome.

Acrylic on canvas, 2024.

Spiral Surge 48 inches × 48 inches



Spiral Surge channels force and persistence through dense circular motion and aggressive mark-making. Deep black fields are driven by spiraling gestures that suggest pressure, resistance, and sustained effort. The composition reads as kinetic and weighted, translating endurance into rhythm and motion. Within the Sow series, the work reflects persistence as an active, physical state—movement driven forward through intensity rather than resolution.

Eroding Boundaries 24 inches × 24 inches



Eroding Boundaries explores persistence through repetition and pressure. Built from circular, forceful gestures, the surface appears worn and reshaped by continual motion, as if resistance is being slowly broken down. Dark tones dominate, grounding the composition, while subtle openings in the texture suggest moments of release and transformation. The work reflects the core of the Sow series—progress formed not through ease, but through steady erosion and sustained effort.

Nocturnal Currents 24 inches × 24 inches

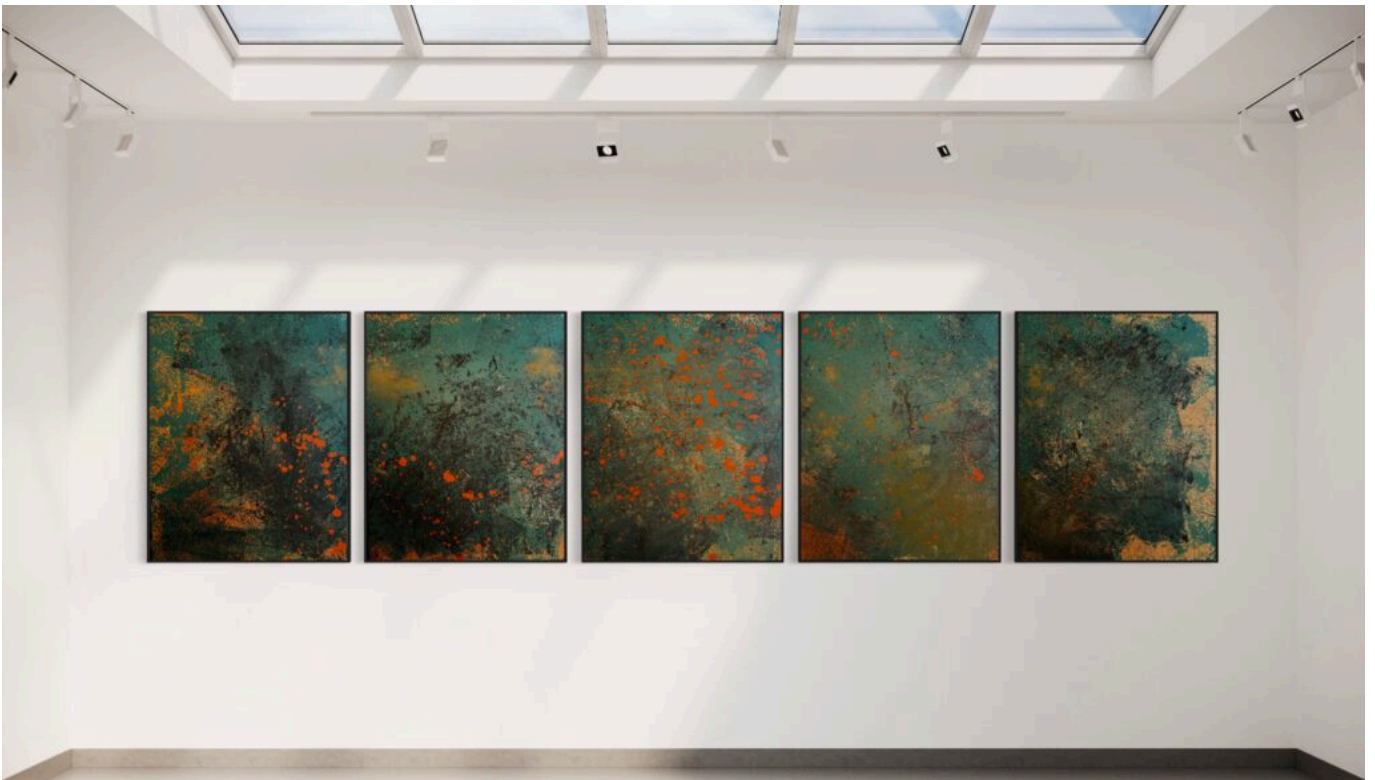
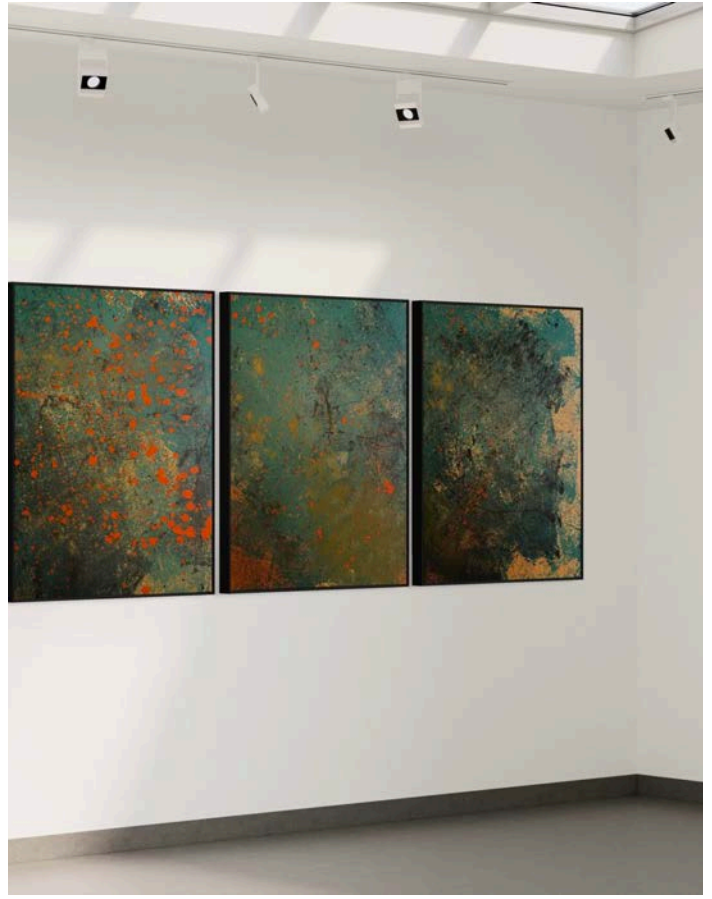


Eroding Boundaries explores persistence through repetition and pressure. Built from circular, forceful gestures, the surface appears worn and reshaped by continual motion, as if resistance is being slowly broken down. Dark tones dominate, grounding the composition, while subtle openings in the texture suggest moments of release and transformation. The work reflects the core of the Sow series—progress formed not through ease, but through steady erosion and sustained effort.

Hidden Strata 24 inches × 24 inches



Hidden Strata focuses on persistence through accumulation. Dense, circular gestures are layered in dark tones, creating a surface that feels worked, compressed, and continually reformed. Each mark suggests repeated effort—pressure applied again and again—building momentum through depth rather than speed. The piece reflects the Sow series' exploration of labor beneath the surface, where progress is shaped through endurance and sustained force over time.



Più is a series of abstract works exploring movement, cultural memory, and identity between Italy and America. Vibrant orange signals momentum and vitality, layered into grounded textures and natural materials that hold history while pushing forward. Acrylic and mixed materials on canvas, 2024

CURRENTLY PLACED

Più-Work 1.



CURRENTLY PLACED

Più-Work 2.



CURRENTLY PLACED

Più-Work 3.









CONTACT



1-646-259-1332



gk@untamedmoderns.com



untamedmoderns.com